

BAKERY UTENSILS

Scoops

Stainless Steel

Aluminium

Polycarbonate

Plastic



HB16 : 170 ml
HB17 : 340 ml
HB19 : 1 L
HB263 : 2.8 L

HK97 : 150 ml
HL340 : 300 ml

HL341 : 850 ml
HL342 : 1.9 L

PR6 : 450 ml
PR7 : 1 L

Measuring Spoon

Stainless Steel



AC5 : 4 Pcs
 1/4 Teaspoon
 1/2 Teaspoon
 1 Teaspoon
 1 Tablespoon

HSG150 : 4 Pcs
 1/4 Teaspoon
 1/2 Teaspoon
 1 Teaspoon
 1 Tablespoon

HK281 : 5 Pcs
 1/8 Teaspoon
 1/4 Teaspoon
 1/2 Teaspoon
 1 Teaspoon
 1 Tablespoon

HSG47 : 4 Pcs
 1/4 Cup
 1/3 Cup
 1/2 Cup
 1 Cup

HU13
 60ml

HU14
 60 ml

HU11
 250 ml

HU12
 500 ml

Measuring Cup

Stainless Steel Glass

MOULDS

Pudding Moulds

Stainless Steel



HJA56
 5x4 cm

HSG71
 6x4.3 cm

HK206
 6.5x3.5 cm

HK20
 7.5x4 cm

HK15
 6x6 cm

HK16
 6x6 cm

HK14
 8.3x5.5 cm

HK88
 8.5x8.5 cm

HK30
 6.7x5.6 cm

Aluminium

Food moulds

Stainless Steel

Round

Cylinder

Square



HSG113
 12x4 cm

HSG2
 4.5x7 cm

HSG1
 7.5x7.5 cm

HSG119
 4x12 cm

HSG3
 6x6x6 cm

HK80
 8x8x4.5 cm

HK78
 8x4.5 cm

Half Sphere

Pyramid

Cake Pans
 Removable Base

Aluminium

Tart/Pie

Made in France 



HK207 : 8 cm
HK208 : 10 cm
HL93 : 8.5 x9 cm

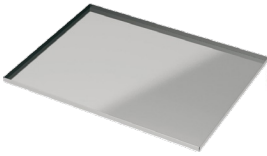
HU27 : 18x6.8 cm
HU28 : 24x6.8 cm

HK210 : 20.5x5 cm
HK211 : 25.5x5 cm
HK212 : 30.5x5 cm
HM87 : 24 cm
HM86 : 28 cm

Made in France

ALUMINIUM PANS

Baking Tray



Full Pan
HK71 : 40x60x2 cm
(Fabricated)

Bun Pans



Half pan
HL10 : 46x33x0.9 cm
Full pan
HL12 : 46x66x0.9 cm

Perforated



Half pan
HL11 : 46x33x0.9 cm
Full pan
HL13 : 46x66x0.9 cm

Roast Pans



HJ106 : 35.5x47x7 cm
HJ107 : 41.5x52.5x7 cm

NON STICK PANS

Cookie Sheet



HMP7 : 36x41 cm

Muffin Pan



HU26 : 26.5x35x3 cm
(12 Cups)

BAKING MAT

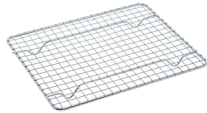
Silicone



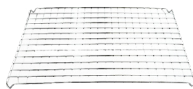
HL46 : 40x60 cm
Suite with HK71

STAINLESS RACKS

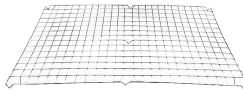
Cooling Racks



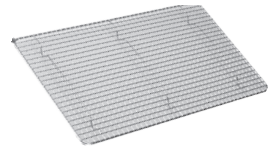
HL26 : 20,3 x 25 cm
HL27 : 25 x 46 cm



AC2 : 25 x 38 cm
AC1 : 25 x 43 cm



AC3 : 37 x 63 cm



HB8 : 26 x 46 cm

SCRAPER

Decorating Stainless Steel



HJ47 : 11x7.5 cm

Dough Scraper Plastic



HJ46 : 13.5 x 9 cm

Stainless Steel



HK82 : 14.5x11 cm

CUTTER

Pie & Cake



HL33 : 32.5 x 27 cm
10 cuts/12 cuts

Sandwich



HSG79
13x20 cm

SPATULA

Plastic



AC17 : 26 cm
AC16 : 31 cm

Silicone



HM111 : 35 cm
HM131 : 45 cm

MATFER
260°C
500°F
Made in France

Silicone



200°C
392°F
HL422 : 36 cm
HL423 : 41 cm

Silicone Bowl Shape



200°C
392°F
HL424 : 36 cm

Stainless Steel



HK277 : 36 cm
HK275 : 38 cm

BOWL WHIPPING

Stainless Steel



HK73 20 cm
HK74 25 cm
HK75 30 cm
HK76 35 cm
HK77 40 cm

FLOUR MESH

Stainless Steel



HSG74 24 cm

CAKE DECORATING

Stainless Steel



HJ80 55 Pcs

PIPING BAGS



HM68 25 cm
HM680 34 cm
HM681 46 cm
HM682 60 cm
HM683 70 cm



HCH305 25 cm
HCH306 30 cm
HCH308 40 cm
HCH309 45 cm

Coupler Attachment



HK95 30 cm
HK96 40 cm

Disposable Icing Bag



HJ104 200 pcs/box
HJ105 45 cm
 53 cm

PASTRY BRUSHES



HM693 4.5 cm



HM695 5 cm



HM694 6 cm



HCH317 4 cm



HCH315 3.8 cm



HCH316 7.6 cm



HCH216 38 cm
HCH218 46 cm

ROLLING

CAKE COVER

Polycarbonate Clear



HL14 : 30x13 cm



HMJ100 : 41x19.5 cm



HMJ107 : 54x33.5x14.5 cm



HL570 : 34x13 cm



HMJ101 : 40.5 cm



HMJ108 : 54x33.5x14.5 cm

CAKE STAND

Stainless Steel



HSG435 : 33 x 9 cm



HSG434 : 33 x 17.5 cm

GLOVES



HM102 : 10 cm



250°C **UIP109** : 15 x 29 cm

WHISK

Whisk Light (Piano Type)



HK268 25 cm

HK267 35 cm

HK266 45 cm



HK272 30 cm

HK270 40 cm

HK281 50 cm

Whisk Heavy French



HK269 35 cm



HK278 45 cm

CHEF'S TORCH



HM89

HCH333

INGREDIENTS BINS



HG1 : 8L

HG2 : 20L

HG3 : 40L

CENTRO



HG72 : 81L

74.5 x 32.8 x 74 cm

HG69 : 102L

75 x 41 x 74.5 cm

Ingredient Bins are designed to fit under standard work tables to efficiently store bulk dry ingredients.

The polycarbonate lids are clear to easily identify contents. Smooth internal and external surfaces are easy to clean.

BAKERY TROLLEY



SS72 : 46 x 62.5 x 180 cm

TURBOFAN

Convection Oven



E32D4
Digital Electric Oven - 4 Trays
Full Size Tray
WxDxH : 73.5x81x73 cm

(Suit with SK32)



Stand



SK32
Stainless steel stand
Castors 2 with swivel lock
WxDxH : 73.5x65x88 cm

(Suit with E32D4)

Provers



PM8
Manual Electric Prover
Full Size Tray
WxDxH : 73.5x81x91.5 cm
Volume : 0.76 m³



WELCOME
TO OUR NEW VISION FOR
TURBOFAN



PLANETARY MIXERS

5 Litre



- ED5**
- Bowl capacity 5 litre
 - 10 variable speeds control ranges from a very fast whip to a very slow stir
 - Complete with 5 litre bowl
 - 1 beater
 - 1 whisk
 - 1 spiral hook
 - 1 pastry knife
 - WxDxH 31x40x45.5 cm

8 Litre



- ED8**
- 8 litre stainless steel bowl
 - 3 Variable Speeds
 - Digital timer
 - Complete with 8 litre bowl
 - 1 whisk
 - 1 beater
 - 1 hook
 - WxDxH 36x47x66 cm

20 Litre



- ED20**
- 20 litre stainless steel bowl
 - 3 Variable Speeds
 - Complete with 20 litre bowl
 - 1 whisk
 - 1 beater
 - 1 hook
 - WxDxH 51x 54x 84 cm

40 Litre



- ED40**
- 40 litre stainless steel bowl
 - 3 Variable Speeds
 - Complete with 40 litre bowl
 - 1 whisk
 - 1 paddle (leaf type)
 - 1 hook
 - WxDxH 56x63x110 cm

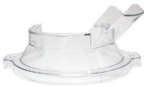
60 Litre



- ED60**
- 60 litre stainless steel bowl
 - 3 Variable Speeds: Low (99 rpm) Intermediate (176 rpm) High (320 rpm)
 - Complete with 60 litre bowl
 - 1 flat beater
 - 1 wire whip
 - 1 spiral dough hook
 - WxDxH 65x75x131cm

Accessories

For 5L Mixer



- ED51**
Bowl Guard



- ED5A**
Bowl Stainless Steel

For 20L Mixer

- ED10A**
- Beater
 - Whip
 - Spiral Hook
 - 10L Bowl

